



OPTISTICK User Guide

OPTISTICK

For fast and accurate repeat drive programming

Compatibility:

This Option is suitable for use on the following product range:

ODE-2 Drives
ODP-2 Drives
ODV-2 Drives

Note:

Parameters can only be copied between drives of the same product range and power rating (size).

Part No. - OPT-2-STICK-IN

Invertek Drives Ltd
Offa's Dyke Business Park
Welshpool
Powys, UK
SY21 8JF
Internet: www.invertek.co.uk

82-STICK-IN Iss 2.00



Drive display message to show the status for certain operation

PASS-r : Optistick read / stored the drive parameters successfully.

DS-Loc : Optistick is locked; attempting to read parameter from the drive with Optistick lock switch on.

FA iL-r : Optistick failed to read parameter from the drive.

PASS-t : Optistick transferred parameters to the drive (write parameters to drive) successfully.

FA iL-P : The power rating of the parameters saved in the Optistick does not match the power-rating of the drive to be programmed.

FA iL-t : Optistick failed to transfer parameter set to drive.

no-dAt : No parameter data saved in the Optistick.

dr-Loc : Drive parameters have been locked and cannot accept new parameter settings. Unlock drive parameter set.

dr-rUn : Drive is running and cannot accept new parameter settings. Stop drive operation before programming.

tYPE-E : Parameters for Drive type saved in Optistick do not match the drive type to be programmed (write operation only).

tYPE-F : Optistick currently doesn't support the drive type to be programmed.



OPTISTICK User Guide

OPTISTICK

For fast and accurate repeat drive programming

Compatibility:

This Option is suitable for use on the following product range:

ODE-2 Drives
ODP-2 Drives
ODV-2 Drives

Note:

Parameters can only be copied between drives of the same product range and rating (size).

Part No. - OPT-2-STICK-IN

Invertek Drives Ltd
Offa's Dyke Business Park
Welshpool
Powys, UK
SY21 8JF
Internet: www.invertek.co.uk

82-STICK-IN Iss 2.00



Drive display message to show the status for certain operation

PASS-r : Optistick read / stored the drive parameters successfully.

DS-Loc : Optistick is locked; attempting to read parameter from the drive with Optistick lock switch on.

FA iL-r : Optistick failed to read parameter from the drive.

PASS-t : Optistick transferred parameters to the drive (write parameters to drive) successfully.

FA iL-P : The power rating of the parameters saved in the Optistick does not match the power-rating of the drive to be programmed.

FA iL-t : Optistick failed to transfer parameter set to drive.

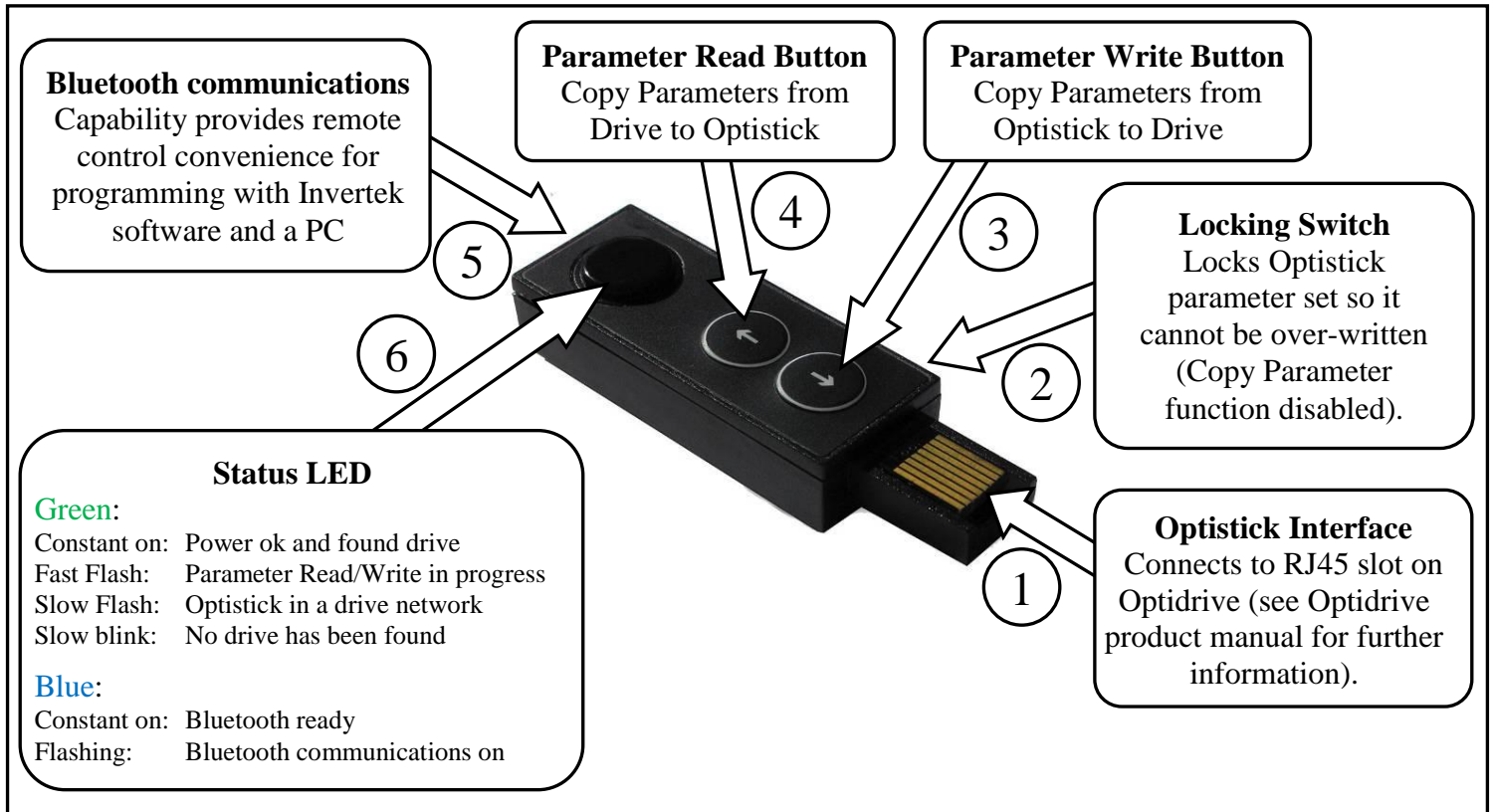
no-dAt : No parameter data saved in the Optistick.

dr-Loc : Drive parameters have been locked and cannot accept new parameter settings. Unlock drive parameter set.

dr-rUn : Drive is running and cannot accept new parameter settings. Stop drive operation before programming.

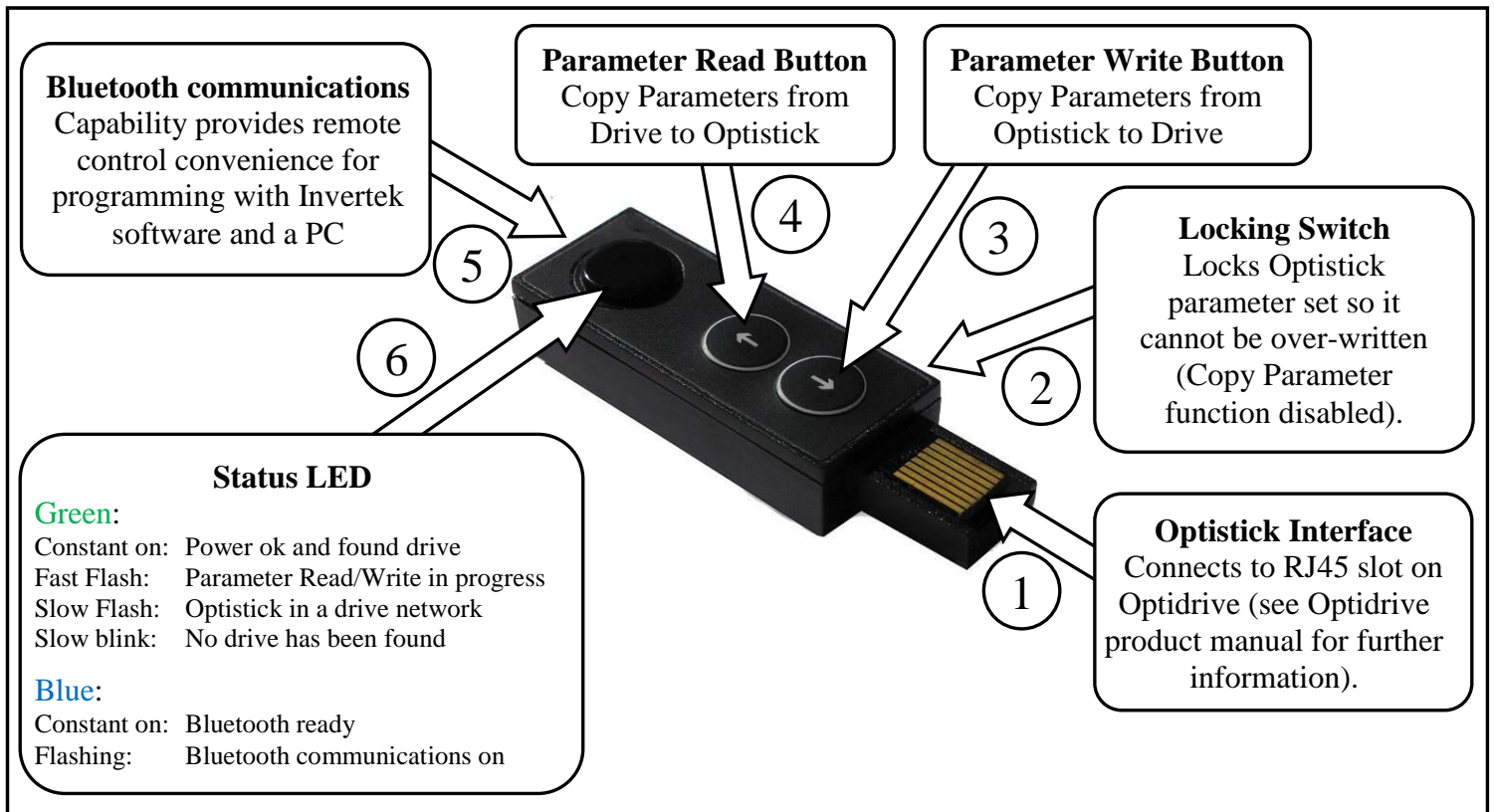
tYPE-E : Parameters for Drive type saved in Optistick do not match the drive type to be programmed (write operation only).

tYPE-F : Optistick currently doesn't support the drive type to be programmed.



Using Invertek Windows PC software:

- Download the appropriate PC software from the Invertek Website. (PC must have a Bluetooth port in order to use Bluetooth communication)
- Insert the Optistick into the drive.
- Pair the Bluetooth device. Default pairing code is "0000" and default device name is "Optistick".
- Setup an outgoing port on the PC with the Optistick Bluetooth device. This port will be used by PC software.



Using Invertek Windows PC software:

- Download the appropriate PC software from the Invertek Website. (PC must have a Bluetooth port in order to use Bluetooth communication)
- Insert the Optistick into the drive.
- Pair the Bluetooth device. Default pairing code is "0000" and default device name is "Optistick".
- Setup an outgoing port on the PC with the Optistick Bluetooth device. This port will be used by PC software.